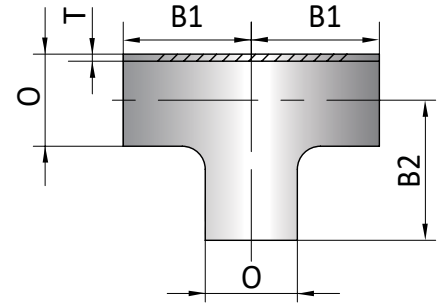


Tees

Tee with Straight End DIN 11852 Form TS



Nominal Size	O	B1/B2	T	Ordering Code
10	13	26.0	1.5	010000-400-D* **
15	19	35.0	1.5	015000-400-D* **
20	23	40.0	1.5	020000-400-D* **
25	29	50.0	1.5	025000-400-D* **
32	35	55.0	1.5	032000-400-D* **
40	41	60.0	1.5	040000-400-D* **
50	53	70.0	1.5	050000-400-D* **
65	70	80.0	2.0	065000-400-D* **
80	85	90.0	2.0	080000-400-D* **
100	104	100.0	2.0	100000-400-D* **
125	129	187.5	2.0	125000-400-D* **
150	154	225.0	2.0	150000-400-D* **
200	204	300.0	2.0	200000-400-D* **



* The first digit refers to material guide, according to Table 1
 ** The last digit refers to surface quality, according to Table 2

Table 1

Material Guide	
1.4301 (304)	1
1.4307 (304L)	2
1.4404 (316L)	4
1.4435 (316L BPE)	7

Table 2

Inside Surface	Outside Surface	Ordering Code
Inside Surface	Outside Surface	
No finish requirement	No finish requirement	0
MP 30µ-in 0,8µm	No finish requirement	1
MP 20µ-in 0,51µm	No finish requirement	2
MP 30µ-in 0,8µm	MP 30µ-in 0,8µm	3
MP 20µ-in 0,51µm	MP 30µ-in 0,8µm	4
EP 20µ-in 0,51µm	EP 20µ-in 0,51µm	M
Mirror	Mirror	9

*MP: Mechanically Polished

Ordering Example

Description	Nominal Size	Ordering Code
Type 400	25	025000-400-D43*

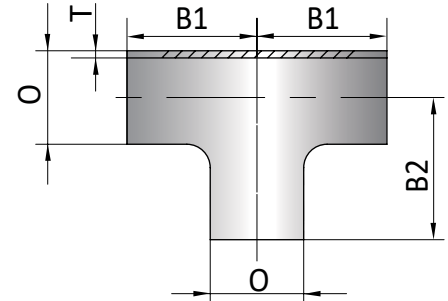
*Material and Surface are including to the ordering code

Tees

Tee with Straight End for Tubes
DIN 11852 Serie 1



Nominal Size	O	B1/B2	T	Ordering Code
10	12	26	1.5	010000-402-D* **
15	18	35	1.5	015000-402-D* **
20	22	40	1.5	020000-402-D* **
25	28	50	1.5	025000-402-D* **
32	34	55	1.5	032000-402-D* **
40	40	60	1.5	040000-402-D* **
50	52	70	1.5	050000-402-D* **



* The first digit refers to material guide, according to Table 1
 ** The last digit refers to surface quality, according to Table 2

Table 1

Material Guide	
1.4301 (304)	1
1.4307 (304L)	2
1.4404 (316L)	4
1.4435 (316L BPE)	7

Table 2

Inside Surface	Outside Surface	Ordering Code
Inside Surface	Outside Surface	
No finish requirement	No finish requirement	0
MP 30µ-in 0,8µm	No finish requirement	1
MP 20µ-in 0,51µm	No finish requirement	2
MP 30µ-in 0,8µm	MP 30µ-in 0,8µm	3
MP 20µ-in 0,51µm	MP 30µ-in 0,8µm	4
EP 20µ-in 0,51µm	EP 20µ-in 0,51µm	M
Mirror	Mirror	9

*MP: Mechanically Polished

Ordering Example

Description	Nominal Size	Ordering Code
Type 402	25	025000-402-D43*

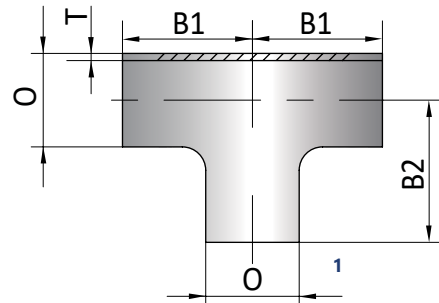
*Material and Surface are including to the ordering code

Tees

Tee with Straight End



Nominal Size	O	B1/B2	T	Ordering Code
8	13.5	20	1.6	008000-400-G* **
10	17.2	28	1.6	010000-400-G* **
15	21.3	30	1.6	015000-400-G* **
20	26.9	28	1.6	020000-400-G* **
25	33.7	38	2.0	025000-400-G* **
32	42.4	48	2.0	032000-400-G* **
40	48.3	57	2.0	040000-400-G* **
50	60.3	64	2.0	050000-400-G* **
65	76.1	76	2.0	065000-400-G* **
80	88.9	86	2.3	080000-400-G* **
100	114.3	105	2.3	100000-400-G* **



* The first digit refers to material guide, according to Table 1

** The last digit refers to surface quality, according to Table 2

Table 1

Material Guide	
1.4301 (304)	1
1.4307 (304L)	2
1.4404 (316L)	4
1.4435 (316L BPE)	7

Table 2

Inside Surface	Outside Surface	Ordering Code
Inside Surface	Outside Surface	
No finish requirement	No finish requirement	0
MP 30µ-in 0,8µm	No finish requirement	1
MP 20µ-in 0,51µm	No finish requirement	2
MP 30µ-in 0,8µm	MP 30µ-in 0,8µm	3
MP 20µ-in 0,51µm	MP 30µ-in 0,8µm	4
EP 20µ-in 0,51µm	EP 20µ-in 0,51µm	M
Mirror	Mirror	9

*MP: Mechanically Polished

Ordering Example

Description	Nominal Size	Ordering Code
Type 400	25	025000-400-G43*

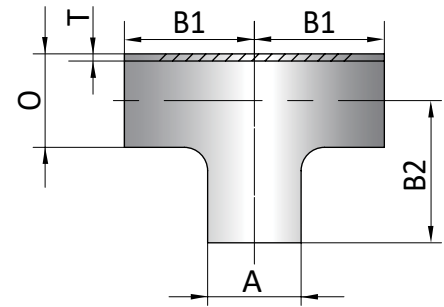
*Material and Surface are including to the ordering code

Tees

DIN 11865 Equal TEE
Form T



Nominal Size	O	B1/B2	T	Ordering Code
6	10.2	30	1.6	006000-450-G* **
8	13.5	32	1.6	008000-450-G* **
10	17.2	34	1.6	010000-450-G* **
15	21.3	36	1.6	015000-450-G* **
20	26.9	55	1.6	020000-450-G* **
25	33.7	60	2.0	025000-450-G* **
32	42.4	65	2.0	032000-450-G* **
40	48.3	65	2.0	040000-450-G* **
50	60.3	90	2.0	050000-450-G* **
65	76.1	110	2.0	065000-450-G* **
80	88.9	130	2.3	080000-450-G* **
100	114.3	160	2.3	100000-450-G* **
125	139.7	200	2.6	125000-450-G* **
150	168.3	250	2.6	150000-450-G* **
200	219.1	300	2.6	200000-450-G* **



* The first digit refers to material guide, according to Table 1
 ** The last digit refers to surface quality, according to Table 2

Table 1

Material Guide	
1.4301 (304)	1
1.4307 (304L)	2
1.4404 (316L)	4
1.4435 (316L BPE)	7

Table 2

Inside Surface	Outside Surface	Ordering Code
Inside Surface	Outside Surface	
No finish requirement	No finish requirement	0
MP 30µ-in 0,8µm	No finish requirement	1
MP 20µ-in 0,51µm	No finish requirement	2
MP 30µ-in 0,8µm	MP 30µ-in 0,8µm	3
MP 20µ-in 0,51µm	MP 30µ-in 0,8µm	4
EP 20µ-in 0,51µm	EP 20µ-in 0,51µm	M
Mirror	Mirror	9

*MP: Mechanically Polished

Ordering Example

Description	Nominal Size	Ordering Code
Type 450	25	025000-450-G43*

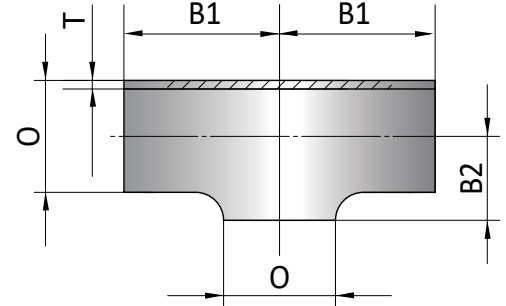
*Material and Surface are including to the ordering code

Tees

Tee Without Straight End DIN 11852 Form RTS



Nominal Size	A	L	B2	T	Ordering Code
10	13	26.0	9.0	1.5	010000-458-D* **
15	19	35.0	11.0	1.5	015000-458-D* **
20	23	40.0	13.0	1.5	020000-458-D* **
25	29	50.0	16.0	1.5	025000-458-D* **
32	35	55.0	19.5	1.5	032000-458-D* **
40	41	60.0	23.0	1.5	040000-458-D* **
50	53	70.0	30.0	1.5	050000-458-D* **
65	70	80.0	40.0	2.0	065000-458-D* **
80	85	90.0	47.5	2.0	080000-458-D* **
100	104	100.0	58.0	2.0	100000-458-D* **
125	129	187.5	74.0	2.0	125000-458-D* **
150	154	225.0	90.0	2.0	150000-458-D* **
200	204	300.0	115.0	2.0	200000-458-D* **



* The first digit refers to material guide, according to Table 1
 ** The last digit refers to surface quality, according to Table 2

Table 1

Material Guide	
1.4301 (304)	1
1.4307 (304L)	2
1.4404 (316L)	4
1.4435 (316L BPE)	7

Table 2

Inside Surface	Outside Surface	Ordering Code
Inside Surface	Outside Surface	
No finish requirement	No finish requirement	0
MP 30µ-in 0,8µm	No finish requirement	1
MP 20µ-in 0,51µm	No finish requirement	2
MP 30µ-in 0,8µm	MP 30µ-in 0,8µm	3
MP 20µ-in 0,51µm	MP 30µ-in 0,8µm	4
EP 20µ-in 0,51µm	EP 20µ-in 0,51µm	M
Mirror	Mirror	9

*MP: Mechanically Polished

Ordering Example

Description	Nominal Size	Ordering Code
Type 458	25	025000-458-D43*

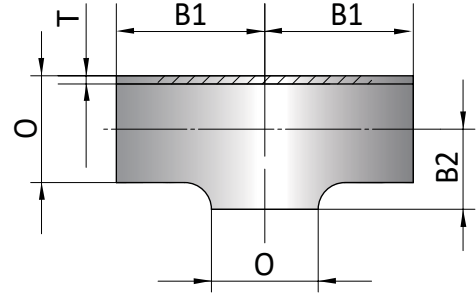
*Material and Surface are including to the ordering code

Tees

Tee Without Straight End for Tubes
DIN 11850 Serie 1



Nominal Size	O	B1	B2	T	Ordering Code
10	12	26	9.0	1.5	010000-459-D* **
15	18	35	11.0	1.5	015000-459-D* **
20	22	40	13.0	1.5	020000-459-D* **
25	28	50	16.0	1.5	025000-459-D* **
32	34	55	19.5	1.5	032000-459-D* **
40	40	60	23.0	1.5	040000-459-D* **
50	52	70	30.0	1.5	050000-459-D* **



* The first digit refers to material guide, according to Table 1
 ** The last digit refers to surface quality, according to Table 2

Table 1

Material Guide	
1.4301 (304)	1
1.4307 (304L)	2
1.4404 (316L)	4
1.4435 (316L BPE)	7

Table 2

Inside Surface	Outside Surface	Ordering Code
Inside Surface	Outside Surface	
No finish requirement	No finish requirement	0
MP 30µ-in 0,8µm	No finish requirement	1
MP 20µ-in 0,51µm	No finish requirement	2
MP 30µ-in 0,8µm	MP 30µ-in 0,8µm	3
MP 20µ-in 0,51µm	MP 30µ-in 0,8µm	4
EP 20µ-in 0,51µm	EP 20µ-in 0,51µm	M
Mirror	Mirror	9

*MP: Mechanically Polished

Ordering Example

Description	Nominal Size	Ordering Code
Type 459	25	025000-459-D43*

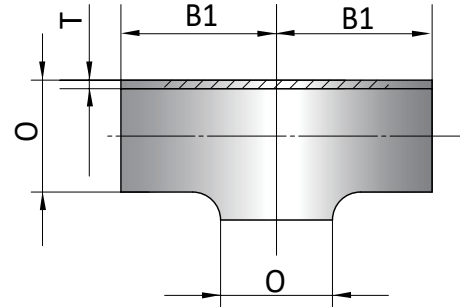
*Material and Surface are including to the ordering code

Tees

DIN 11865 Equal TEE
Form TK



Nominal Size	O	B1	T	Ordering Code
6	10.2	30	1.6	006000-458-G* **
8	13.5	32	1.6	008000-458-G* **
10	17.2	34	1.6	010000-458-G* **
15	21.3	36	1.6	015000-458-G* **
20	26.9	55	1.6	020000-458-G* **
25	33.7	60	2.0	025000-458-G* **
32	42.4	65	2.0	032000-458-G* **
40	48.3	65	2.0	040000-458-G* **
50	60.3	90	2.0	050000-458-G* **
65	76.1	110	2.0	065000-458-G* **
80	88.9	130	2.3	080000-458-G* **
100	114.3	160	2.3	100000-458-G* **
125	139.7	200	2.6	125000-458-G* **
150	168.3	250	2.6	150000-458-G* **
200	219.1	300	2.6	200000-458-G* **



* The first digit refers to material guide, according to Table 1
 ** The last digit refers to surface quality, according to Table 2

Table 1

Material Guide	
1.4301 (304)	1
1.4307 (304L)	2
1.4404 (316L)	4
1.4435 (316L BPE)	7

Table 2

Inside Surface	Outside Surface	Ordering Code
Inside Surface	Outside Surface	
No finish requirement	No finish requirement	0
MP 30µ-in 0,8µm	No finish requirement	1
MP 20µ-in 0,51µm	No finish requirement	2
MP 30µ-in 0,8µm	MP 30µ-in 0,8µm	3
MP 20µ-in 0,51µm	MP 30µ-in 0,8µm	4
EP 20µ-in 0,51µm	EP 20µ-in 0,51µm	M
Mirror	Mirror	9

*MP: Mechanically Polished

Ordering Example

Description	Nominal Size	Ordering Code
Type 458	25	025000-458-G43*

*Material and Surface are including to the ordering code